

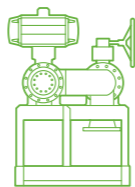
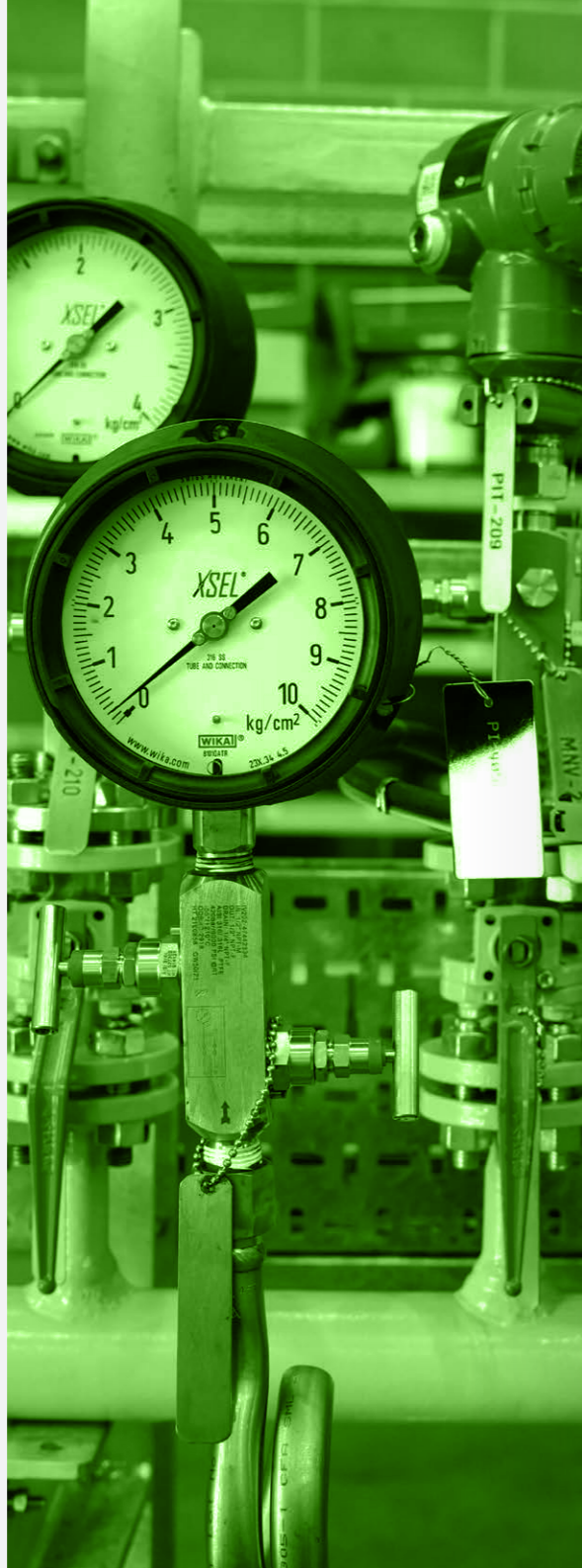
Speak to a Product Specialist

Contact us to discuss your requirements



Jeff Horton
Pipe & Skid Solutions Director

jeffh@acvalvealliance.com
+44 (0)1530 815 818



Products

Alongside the AC Valve Alliance Group's full ball valve and actuation stock offering, Valve & Pipework Systems offer three pipeline products, Zwick Triple Offset Butterfly Valves, Sammi Line Blinds and Morris Eductors. Whether used in conjunction with each other or on their own, these products will give you the ultimate isolation for your application.



Made in Germany, Zwick Armaturen has over 40 years of experience manufacturing very high-integrity triple offset butterfly valves with 100% zero leakage capabilities.



Sammi Line Blinds is a world-leading manufacturer of line blind products. With over 25 years of experience across various industries, they offer a unique and advanced design concept that provides safe and time-efficient benefits.



With over 10 years' experience in specialist venturi product designing and manufacturing in the UK, Morris Ejector Technologies Ltd provide high quality, custom designed, application specific venturi products and solutions.

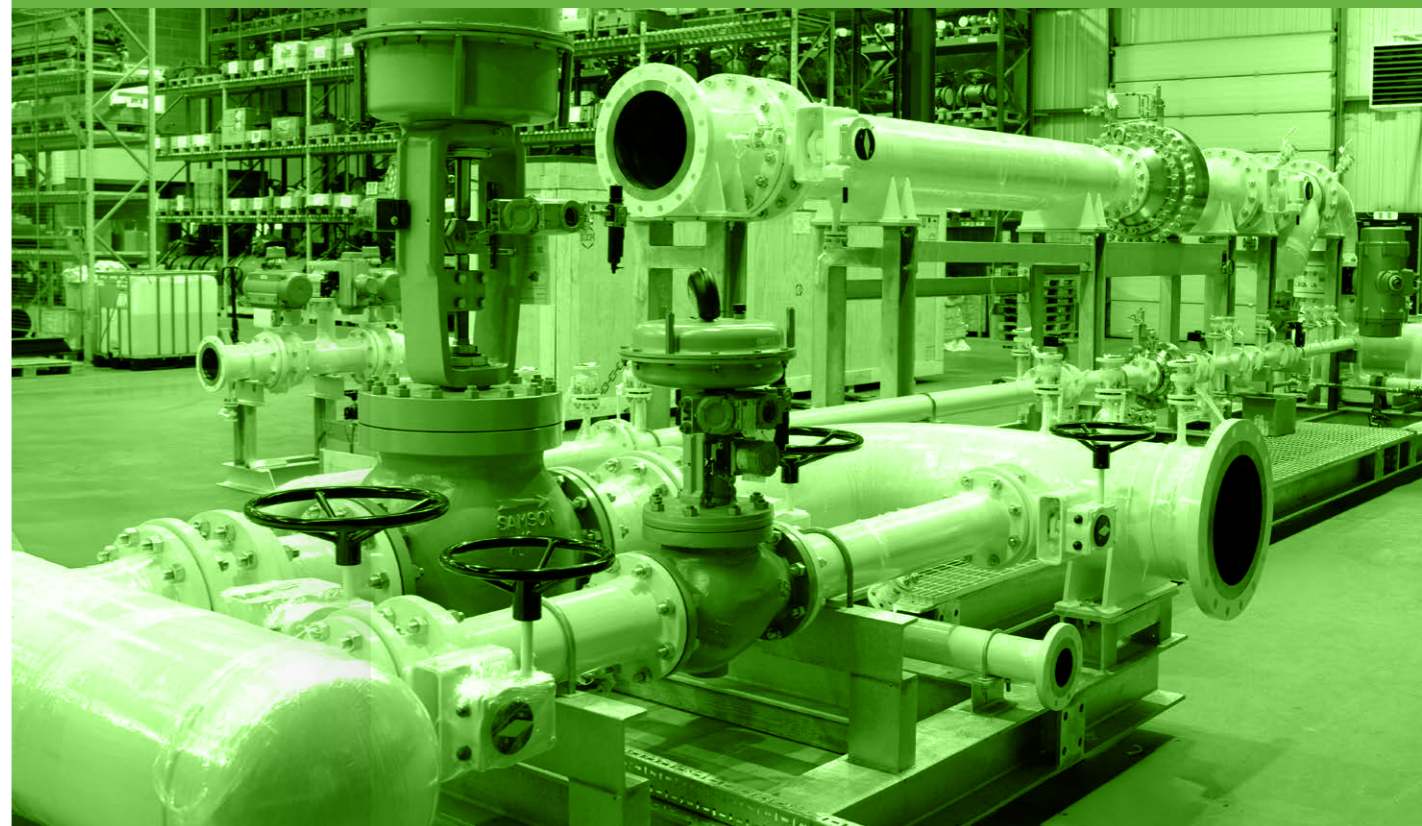


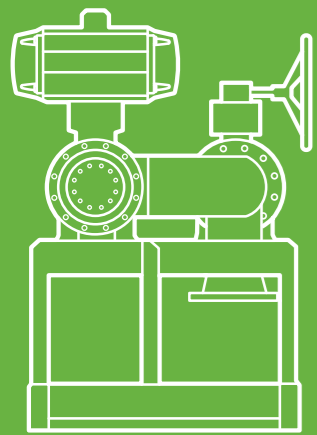
AC Valve Alliance
Unit 6 Interlink Way South
Bardon Hill
LE67 1PH
United Kingdom

+44 (0)1530 815 818
sales@acvalvealliance.com
acvalvealliance.com



Pipe & skid solutions





We provide the full pipe skid project package, direct from the UK.



With access to our vast stocks of valves and actuators, we can design and produce in-house valve and pipework packages. We offer a complete skid-mounted mechanical and electrical system ready to be installed on-site. Built by our experienced engineers to a customer's own design or, using the latest 3D modelling software, we are able to produce our compact and economical solutions working from P&IDs, whilst operating under the latest codes and regulations.

We have developed a first-class reputation for our high-quality, dedicated approach, and our focus on precision which minimises the need for 'snagging' and re-work, saving our customers time and money. Our team oversees the planning and delivery process to ensure a seamless and successful outcome for your project.



Benefits of our pipe and skid solutions

We supply bespoke pilot plants

We build using any material, to any pressure and temperature requirements

We offer fully European material stock options or can source products globally to suit your AVL

Built to ASME and EN standards



Our team of experts can support you with

Product selection

Installation assistance and spare parts

Plant efficiency

3D CAD design

Large scale projects

Documentation

Inspections and testing



Industries we work with

Combustion

Waste heat recovery

Carbon capture

Energy storage

Hydrogen

Oil and gas

Power generation

Steel

General process

Water

Pipe skid project process

1



Initial enquiry

The customer contacts us with their enquiry or project details, and we gather all necessary information, including specifications, technical requirements, and timelines. This may involve a site visit or discussions with the customer's engineering team to ensure a full understanding of the project's scope.

2



Quoting

Prepare a detailed cost estimate covering materials, labour, and delivery. Present it to the customer for review, addressing any questions or changes. Finalise the quote and secure approval to proceed with the project.

3



Design and 3D modeling

Our engineers use the latest 3D software to create detailed CAD models of valve and pipework skid system, visualising and ensuring all components fit together based on the project and customer specifications.

4



Fabrication and assembly

We procure the necessary materials for the project, sourcing many of the valves and controls from stock, followed by the fabrication, manufacturing, and assembly of the valve and pipework systems per approved drawings. We maintain quality control by ensuring each component meets specifications and conducting inspections throughout the process.

5



Testing

We conduct functional tests to ensure the system operates correctly under simulated working conditions. Pressure and leak testing verify that the valve and pipework system is leak-proof and can withstand operating pressures, followed by witness (FAT) Factory Acceptance Testing before final sign-off.

6



Packing and despatch

Carefully pack the system components for transport, ensuring they are well-protected. Prepare all necessary documentation, including certifications, and arrange for the completed system to be delivered to the client's specified location. We're also able to coordinate and load containers for collection from our premises for a more cost-effective option for our customers.