

## Standard Features

- **Motor:** Reversing, brushless, capacitor-run 115 VAC 50/60 Hz, single phase
- **Overload protection:** Integral thermal overload protection for motor windings with automatic reset
- **Gear train:** Permanently lubricated, solid gear that is Rockwell hardened
- **Corrosion resistant housing:** Thermally bonded baked powder coating rated Type 4X with stainless steel trim
- **ISO mounting configuration**
- **Conduit:** Two 1/2" NPT conduit entries to eliminate cross feed between control, feedback, and power signals
- **Position indication:** Highly visible beacon position indicator for positive indication of valve position
- **Declutchable manual override:** Pull up on indicator knob, insert 5/8" wrench onto flats and rotate in the appropriate direction (CCW for open, CW for close). Models with handwheel override do not require a wrench. Simply push down on handwheel until engaged with cam and rotate
- **Limit switches:** Standard end of travel limit switches can be used for light indication (not to be use with PLC for position confirmation)
- **Enclosure:** Weatherproof enclosure rated Type 4X has a thermally bonded powder coat finish with SS trim
- **Captivated SS hexhead slotted cover screws**
- **Corrosion resistant mounting:** Mounting is with PPG or stainless steel bracket, stainless steel coupling, and stainless steel hardware
- **CE compliant motor:** All 115 VAC and 230 VAC motors are CE compliant and stamped as such
- **Extended duty cycles:** Our extended duty cycles are ideal for modulating and high cycling applications
- **Output torque:** Series 92 electric actuators have an output torque range from 400 in./lbs. to 2,000 in./lbs.
- **RoHS Compliant**



## Options

- Auxiliary (additional) limit switches
  - Feedback potentiometer
  - Heater and thermostat
  - Positioner (modulating PCB)
  - Mechanical brake
  - Transmitter
  - Cycle length control module (CLC)
  - Two-wire control
  - Failsafe battery back up (Protek)
  - Voltages
  - Local remote station
  - UL1203 explosion proof enclosure
- See page 194 for more details regarding options.

## Engineering Specifications

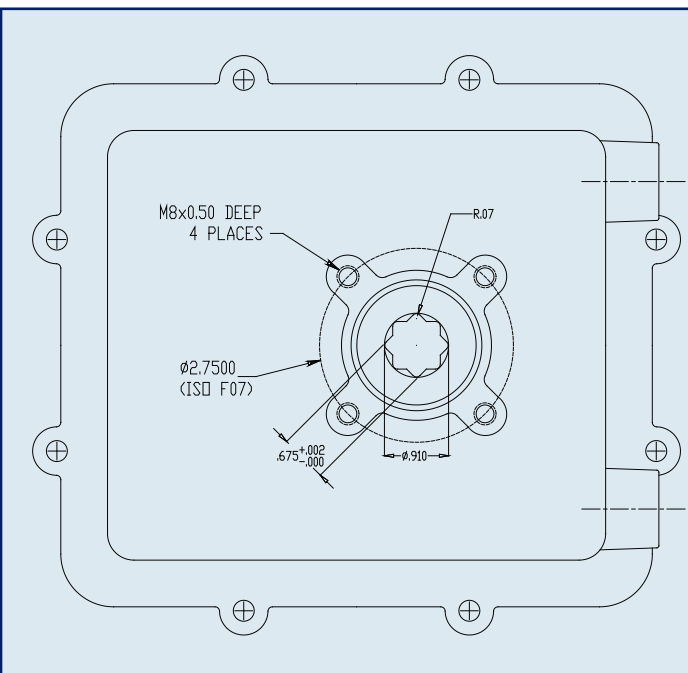
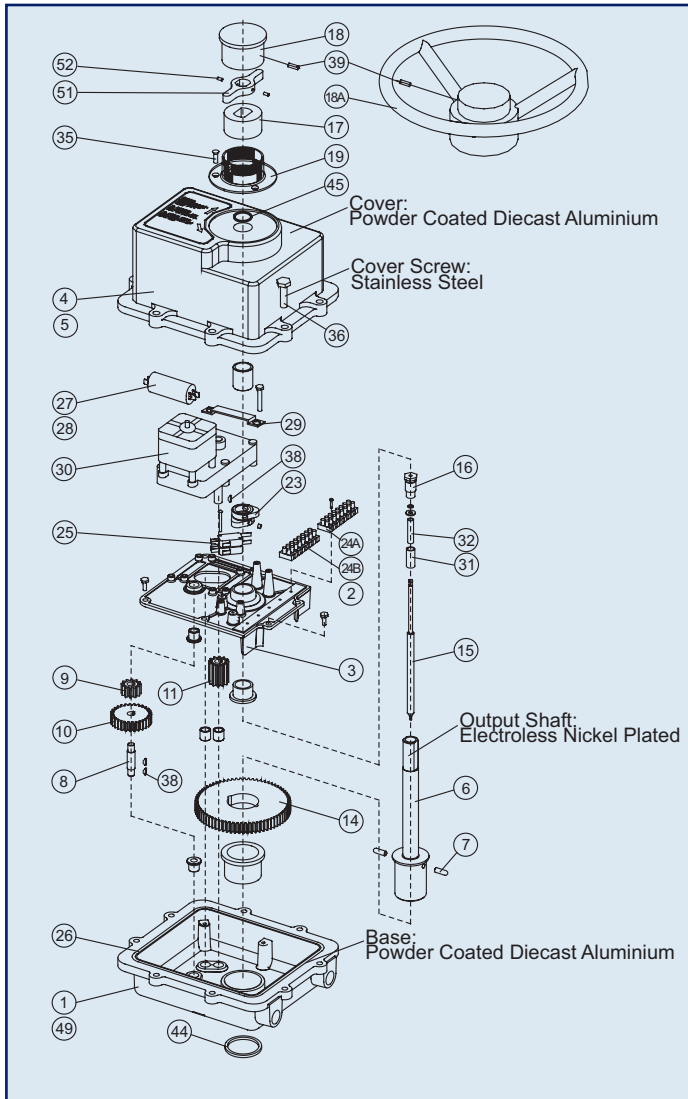
Size: S92, A92, B92, C92  
 Torque: 400-2000 in./lbs  
 Voltage: 120 VAC 1Ph 50/60 Hz  
 Amp Draw: S92, B92 .5A, A92 .8A, C92 1.0A  
 Conduit Entry: Two (2) 1/2" NPT  
 Max Ambient Temperature: 150° F  
 Switches: Two (2) single pole, double throw (2SPDT) 15 amp rated  
 Cycle Time per 90°: S92, A92: 15 seconds\* Approx.  
 B92, C92: 32 seconds\* Approx.

## Engineering Data

Model	Torque (in./lbs)	115 VAC		230 VAC		12 VDC		24 VDC		12 VAC		24 VAC		Cycle Time per 90 Degrees (seconds)*	Weight (lbs)
		Amp Draw	Duty Cycle	Amp Draw	Duty Cycle	Amp Draw	Duty Cycle	Amp Draw	Duty Cycle	Amp Draw	Duty Cycle	Amp Draw	Duty Cycle		
S92	400	0.5	100%	0.4	100%	2.0	75%	4.0	75%	2.0	75%	3.0	75%	15	15.3
A92	700	0.8	75%	0.6	75%	2.0	75%	4.0	75%	2.0	75%	3.0	75%	15	15.3
B92	1100	0.5	100%	0.4	100%	2.0	75%	4.0	75%	2.0	75%	3.0	75%	32	15.3
C92	2000	1.0	50%	0.6	50%	2.0	75%	4.0	75%	2.0	75%	3.0	75%	32	18.3

Note: Amp rating is considered locked rotor. Duty cycles are for ambient temperature (73° F).

\* Cycle times are approximate.



## Parts List

PARTS LIST							
NO.	Part Number	PCS.	S92	A92	B92	C92	Description
1	7401920	1	1	1	1	1	Base
3	7401060	1	1	1	1	1	Base Plate
4	7401940	1	1	1	1	1	Cover
6	7401900	1	1	1	1	1	Shaft Main
6A	7401905					1	Shaft Main
7	7401360	2	2	2	2	2	Pin
8	7401280				1	1	Shaft Stub
9	7402003				1	1	Spur Gear B1
10	7402002				1	1	Spur Gear A1
11	7401400	1	1	1	1	1	Gear Pinion
14	7401380	1	1	1	1	1	Gear Main
15	7401200	1	1	1	1	1	Shaft Inner
15A	7401210					1	Shaft Inner
16	7401180	1	1	1	1	1	Shaft Retainer
17	7401300	1	1	1	1	1	Knob Lower
18	7401320	1	1	1	1	1	Knob Upper
18A	7401995					1	Handwheel
19	7401260	1	1	1	1	1	Collar
23	7401480	2	2	2	2	2	Cam
24A	7401420	1	1	1	1	1	Terminal Block 1-8
24B	7401425	1	1	1	1	1	Terminal Block 9-16
25	7401460	2	2	2	2	2	Switch
26	7401560	1	1	1	1	1	O-Ring Base/Cover
27	7402948	1			1	1	Capacitor 4.2 mFD
27A	7402004			1			Capacitor 6.7 mFD
28	7403008					1	Capacitor 7.6 mFD
29	7401520	1	1	1	1	1	Capacitor Bracket
30	7401340	1	1	1	1	1	Motor
31	7401250	1	1	1	1	1	Shell
32	7401220	1	1	1	1	1	Spring
32A	7401230					1	Spring
35	7401680	3	3	3	3	3	Collar Screw
36	7401640	8	8	8	8	8	Cover Screw
38	7401880	1	1	3	3	3	Key, Woodruff 3/32
39	7401700	1	1	1	1	1	Knob Set Screw
44	7401040	1	1	1	1	1	Seal Base
45	7401140	1	1	1	1	1	Seal Cover
51	7401485					1	Handwheel Cam
52	8100179					2	Cam Set Screw

## Sample Specification

All Series 92 electric actuators shall have a thermally protected, bi-directional (reversing type), capacitor-run motor with a permanently lubricated gear train. 115 VAC and 230 VAC motors shall conform to CE and be indicated on motor housing. Actuator shall have solid, heat treated gearing encompassed in a baked powder coated die cast aluminum housing with thermally bonded powder coat finish with stainless steel trim rated Type 4X. Each actuator to have a declutchable manual override, visual position indication, ISO mounting configuration, and be RoHS compliant, as manufactured by Asahi/America, Inc.